

# Joint Strategic Needs Assessment (JSNA) Summary

Dr Nadeem Hasan

Public health specialist registrar

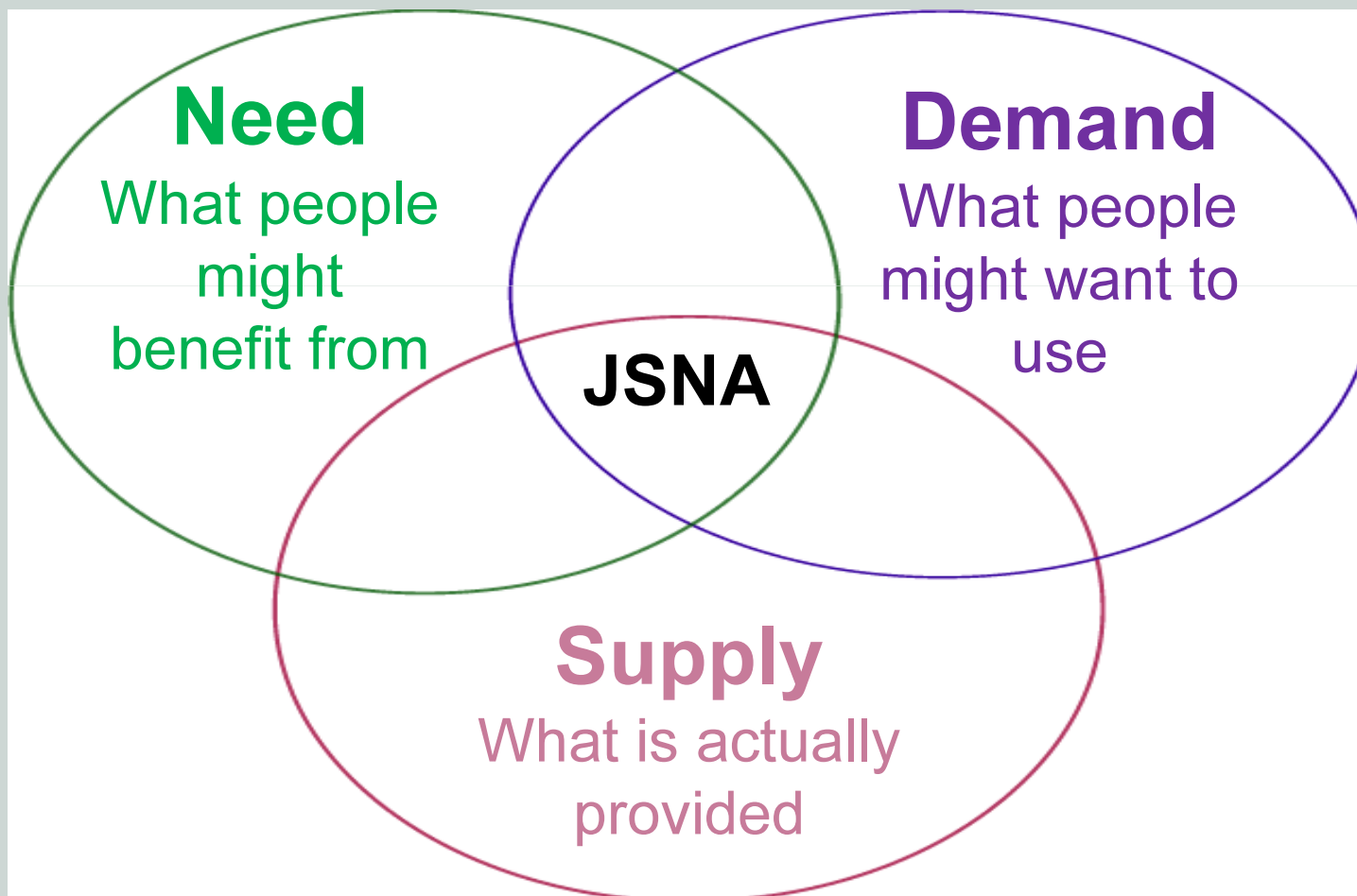
Public health

Presentation prepared by Jon Walker (public  
health analyst)

# What are JSNAs?

- A systematic method for reviewing the health and wellbeing needs of a population, leading to agreed commissioning priorities that will improve health and wellbeing outcomes and reduce inequalities<sup>1</sup>

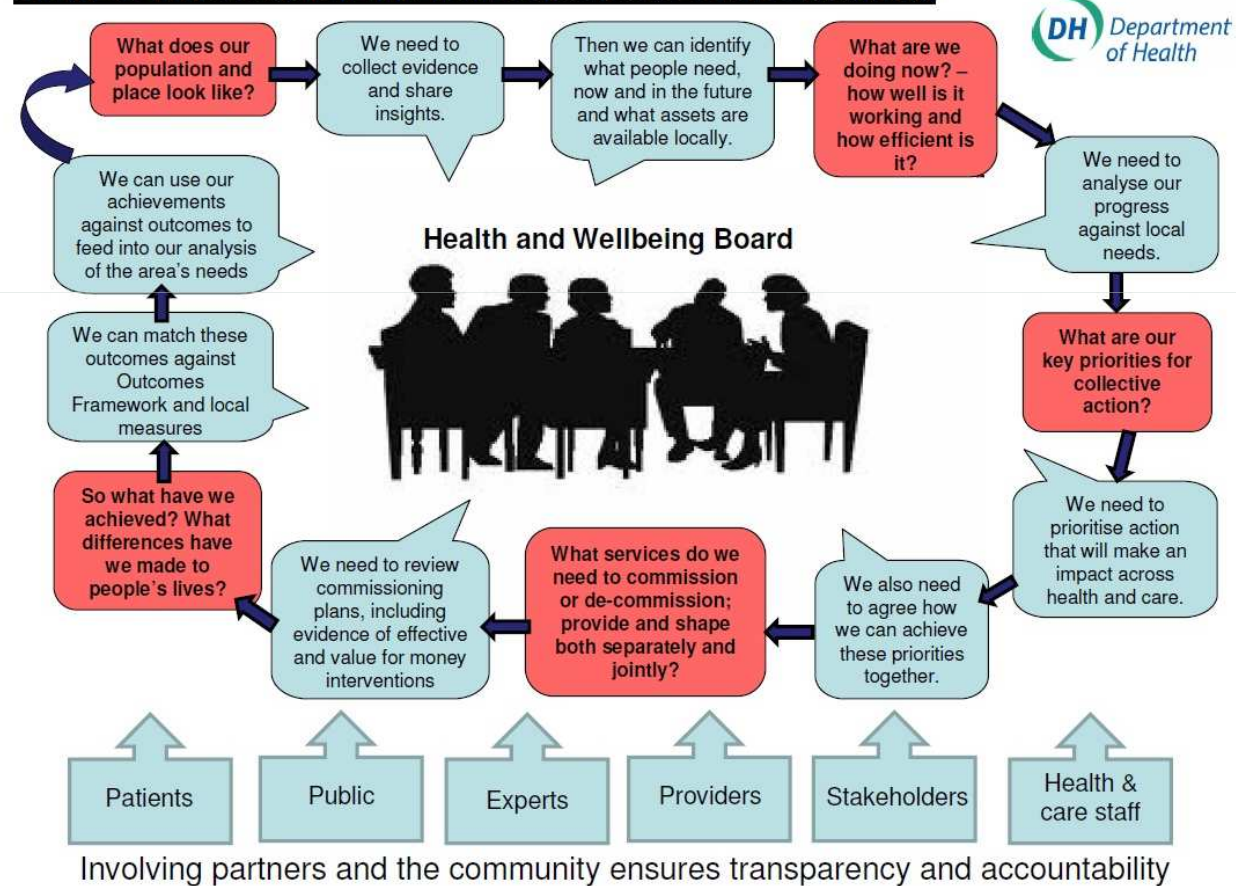
# What does the JSNA do?



# Health and Social Care Act 2012

- Introduces duties and powers for health and wellbeing boards in relation to JSNAs and Joint Health and Wellbeing Strategies (JHWSs)
- Supports principle of local clinical leadership and elected leaders working together to deliver best health and care services based on best evidence of local needs<sup>2</sup>

**JSNA & JHWS: explicit link from evidence to service planning**



# Who is responsible for JSNAs?

- Core members<sup>2</sup>
  - Local authorities
  - Clinical Commissioning Groups (CCGs)
  - NHS Commissioning Board (or representative)
- Duties discharged through the HWBB

# Who is responsible for JSNAs?

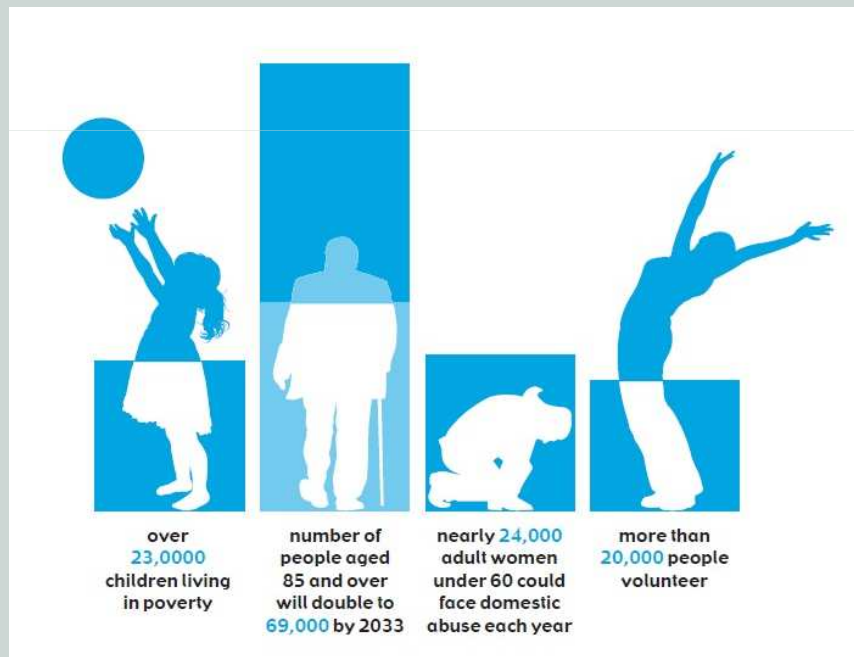
- Additional members<sup>2</sup>
  - Service providers
  - Health and care professionals
  - Criminal justice agencies
  - Fire and rescue
  - Local voluntary and community sector
  - Universities
  - Healthwatch

# JOINT STRATEGIC NEEDS ASSESSMENT SUMMARY

- Single source of information
- Powerful tool for commissioners
- Insights



# SURREY: AN OVERVIEW



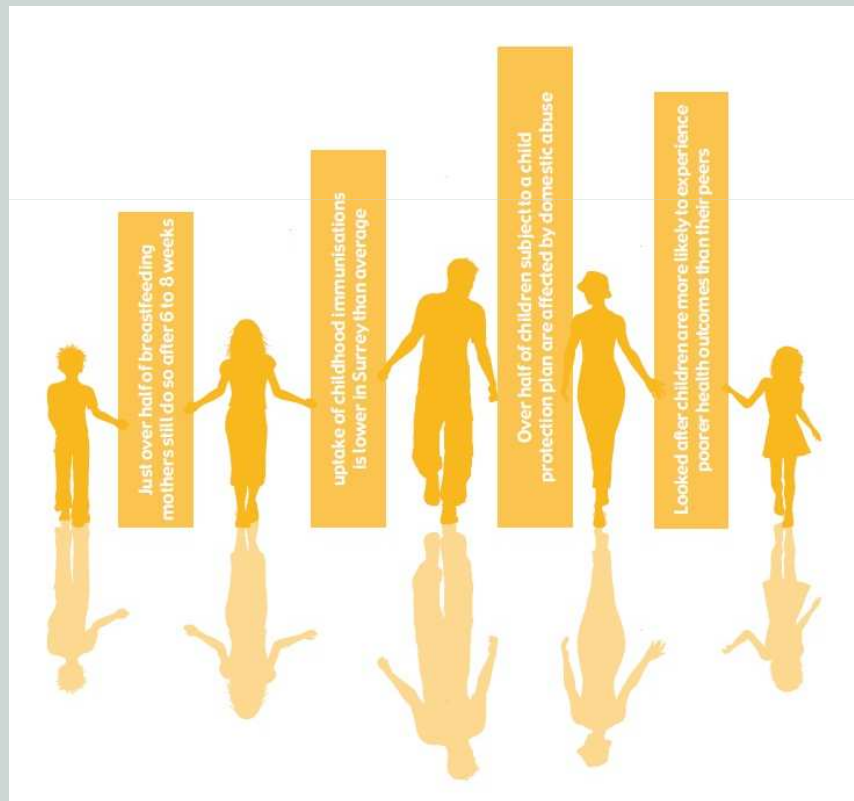
- Surrey has good health and wellbeing
- Pockets of relative deprivation exist - inequalities
- JSNA can identify assets to help meet needs

# HOW WE LIVE OUR LIVES



- Lifestyle impacts the development of long term health problems
- Taking action now could reduce future service demand, address gaps in life expectancy and other health inequalities

# CHILDREN AND YOUNG PEOPLE



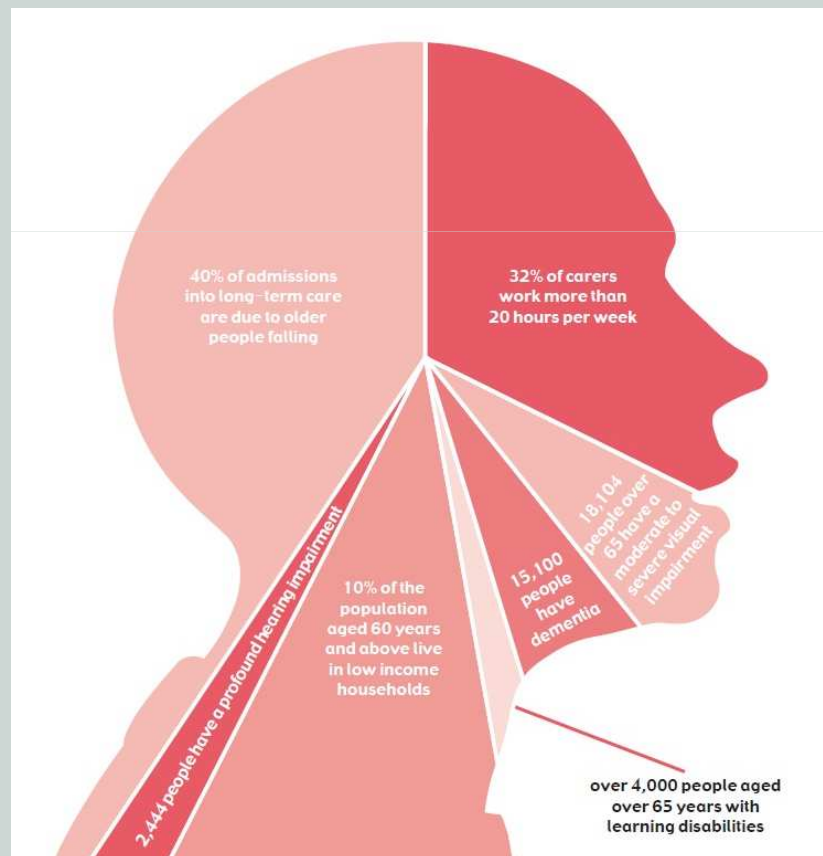
- Gaps still exist in our knowledge of need
- More efficient data collection and sharing can help to develop a more holistic picture and better understanding of need in Surrey

# PEOPLE WITH SPECIFIC AND LONG-TERM CONDITIONS AND THEIR CARERS



- Areas of higher mental health need match areas of greatest deprivation
- There may be 12,000 young carers in Surrey
- Enable people to manage their own conditions

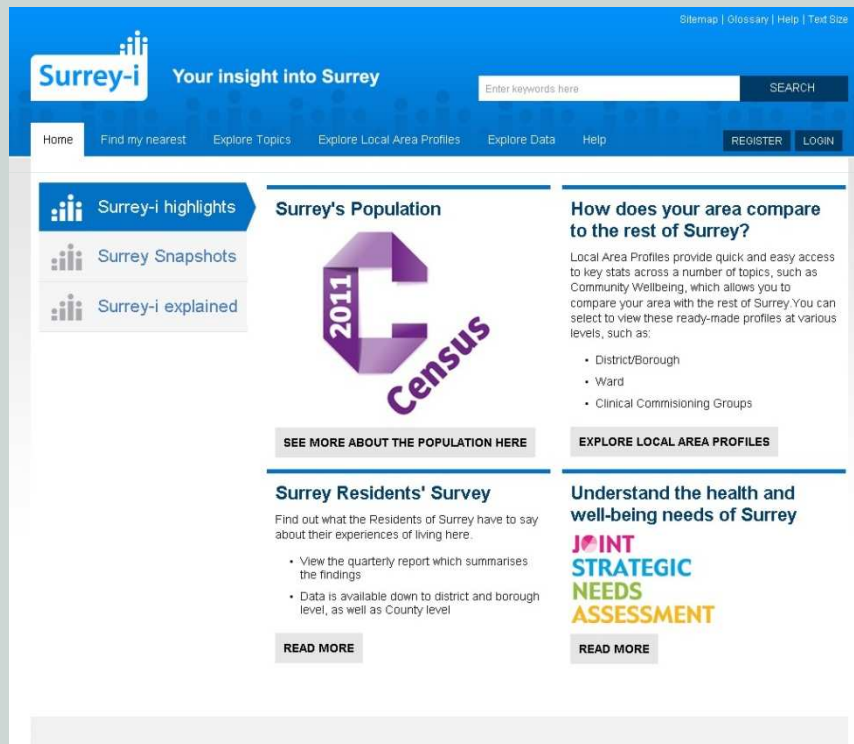
# OLDER PEOPLE



- Numbers with dementia are predicted to rise to 25,000 by 2030
- Over half of all deaths occur in hospitals
- Over 38,000 over 65s are unable to manage at least one physical activity on their own.

# Further information...

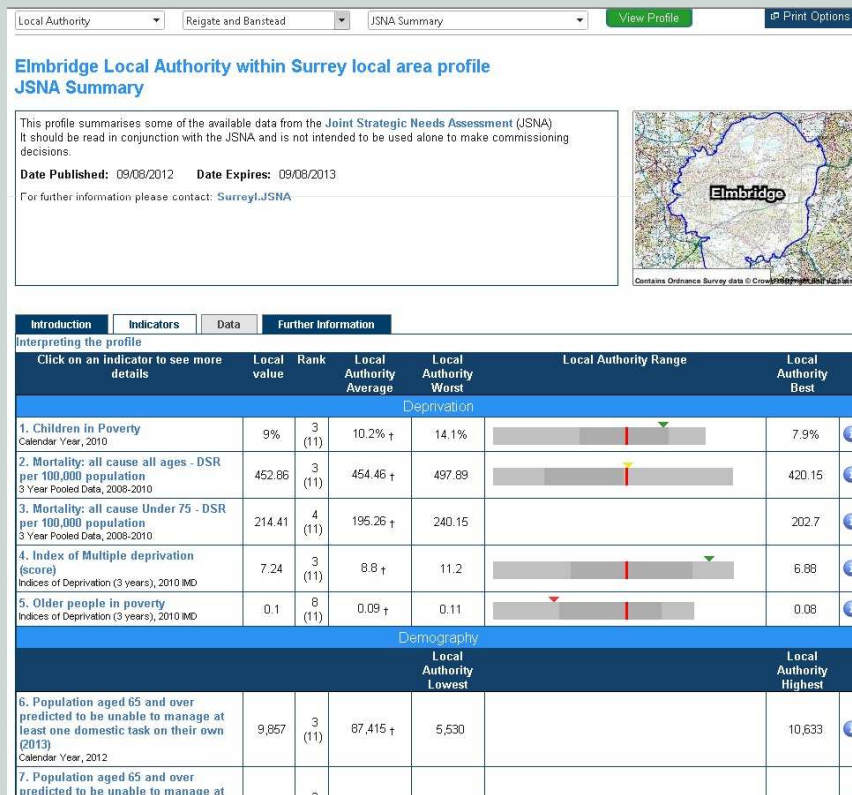
www.surreyi.gov.uk



The screenshot shows the Surrey-i website interface. At the top, there's a blue header with the 'Surrey-i' logo and the tagline 'Your insight into Surrey'. A search bar is present with the placeholder text 'Enter keywords here' and a 'SEARCH' button. Below the header, a navigation menu includes links for 'Home', 'Find my nearest', 'Explore Topics', 'Explore Local Area Profiles', 'Explore Data', and 'Help'. There are also 'REGISTER' and 'LOGIN' buttons. The main content area features a sidebar on the left with 'Surrey-i highlights', 'Surrey Snapshots', and 'Surrey-i explained'. The main content is divided into two columns. The left column has a section titled 'Surrey's Population' with a large '2011 Census' graphic and a 'SEE MORE ABOUT THE POPULATION HERE' button. Below this is a section for 'Surrey Residents' Survey' with a brief description and a 'READ MORE' button. The right column has a section titled 'How does your area compare to the rest of Surrey?' with a paragraph explaining Local Area Profiles and a list of levels: District/Borough, Ward, and Clinical Commissioning Groups. Below this is a 'EXPLORE LOCAL AREA PROFILES' button. At the bottom of the right column is a section for 'Understand the health and well-being needs of Surrey' with a 'JOINT STRATEGIC NEEDS ASSESSMENT' graphic and a 'READ MORE' button.



# JSNA summary profile



- The JSNA summary sits alongside a summary profile of the JSNA produced for CCGs, located on Surrey-i

# Key contacts

- Ben Unsworth – Policy and Performance  
[ben.unsworth@surreycc.gov.uk](mailto:ben.unsworth@surreycc.gov.uk)
- Jon Walker – Public Health  
[jon.walker@surreycc.gov.uk](mailto:jon.walker@surreycc.gov.uk)



# References

1. Guidance on Joint Strategic Needs Assessment. December 2007. Department of Health
2. Statutory Guidance on Joint Strategic Needs Assessments and Joint Health and Wellbeing Strategies. DH. March 2013. Available from: <http://healthandcare.dh.gov.uk/jsnas-jhwss-guidance-published/> [Accessed 3/4/13]